

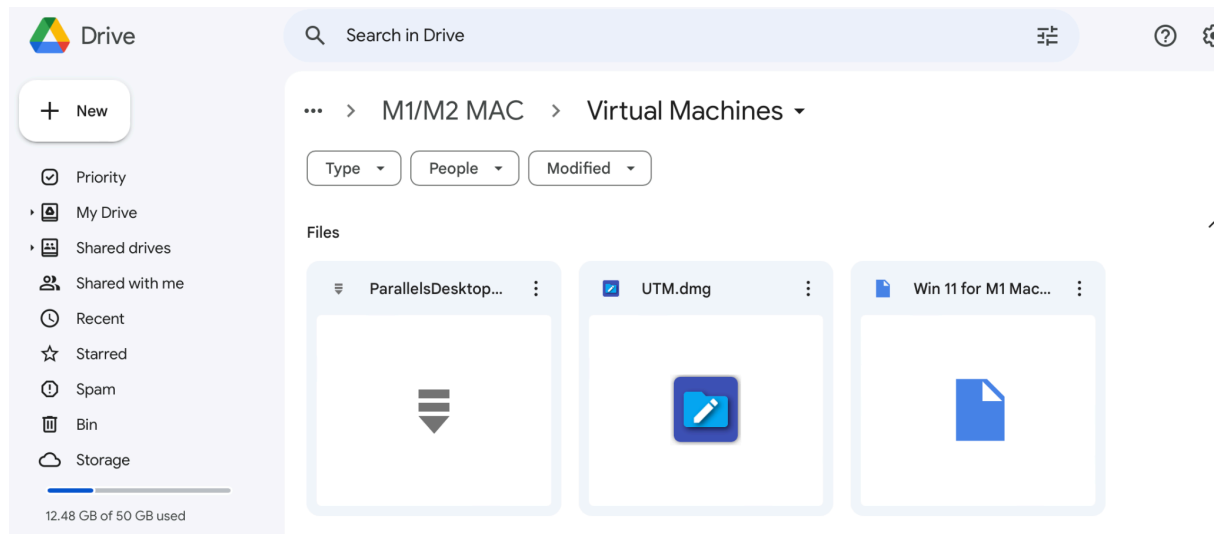


How to install Parallels VM for M1/M2 MACs

Step 1: Download Parallels from Drive

Download the parallel Desktop file from Google Drive (Linked to your college email).

[Shared Drives](#) > [Hidden shared drives](#) > [Software](#) > [Mac Software collection](#) > [Virtual Machines](#) > [Parallel Desktop](#)

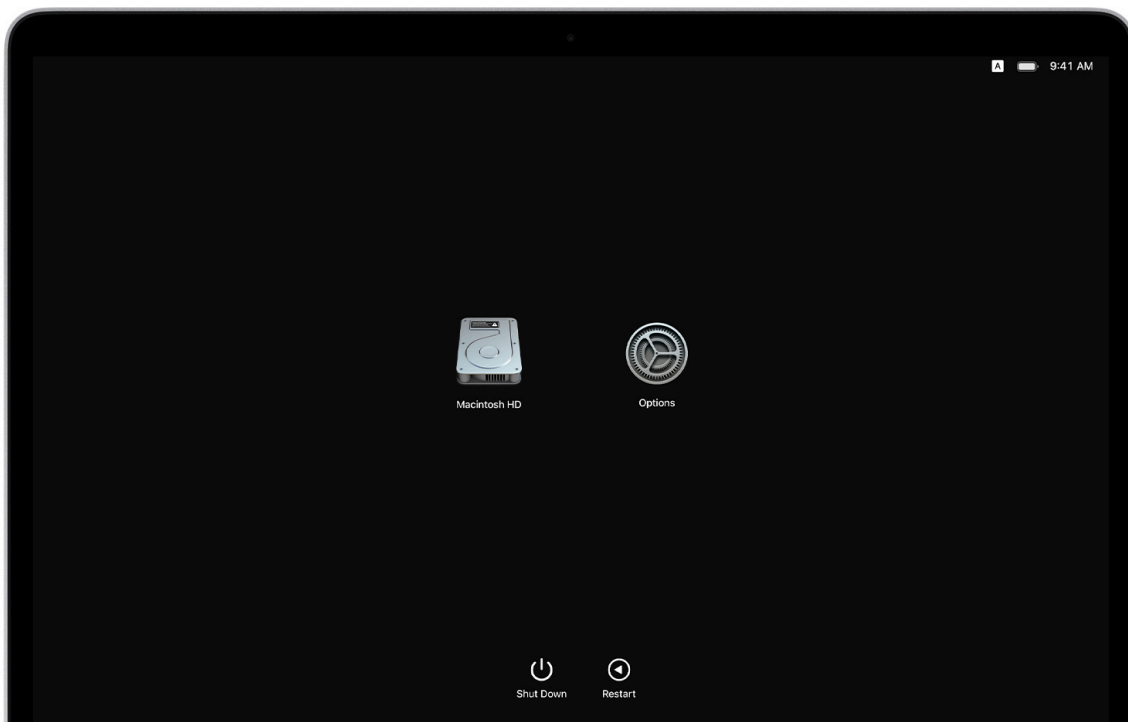


Step 2: Turn off Mac

Shut down your Mac.

Step 3: Turn on Mac holding the Power button

Press and hold the power button while turning on your computer till you see this on your screen.



Step 4: Open Options

Choose Options and then navigate to the user and press next and enter your password.

Step 5: Open Terminal

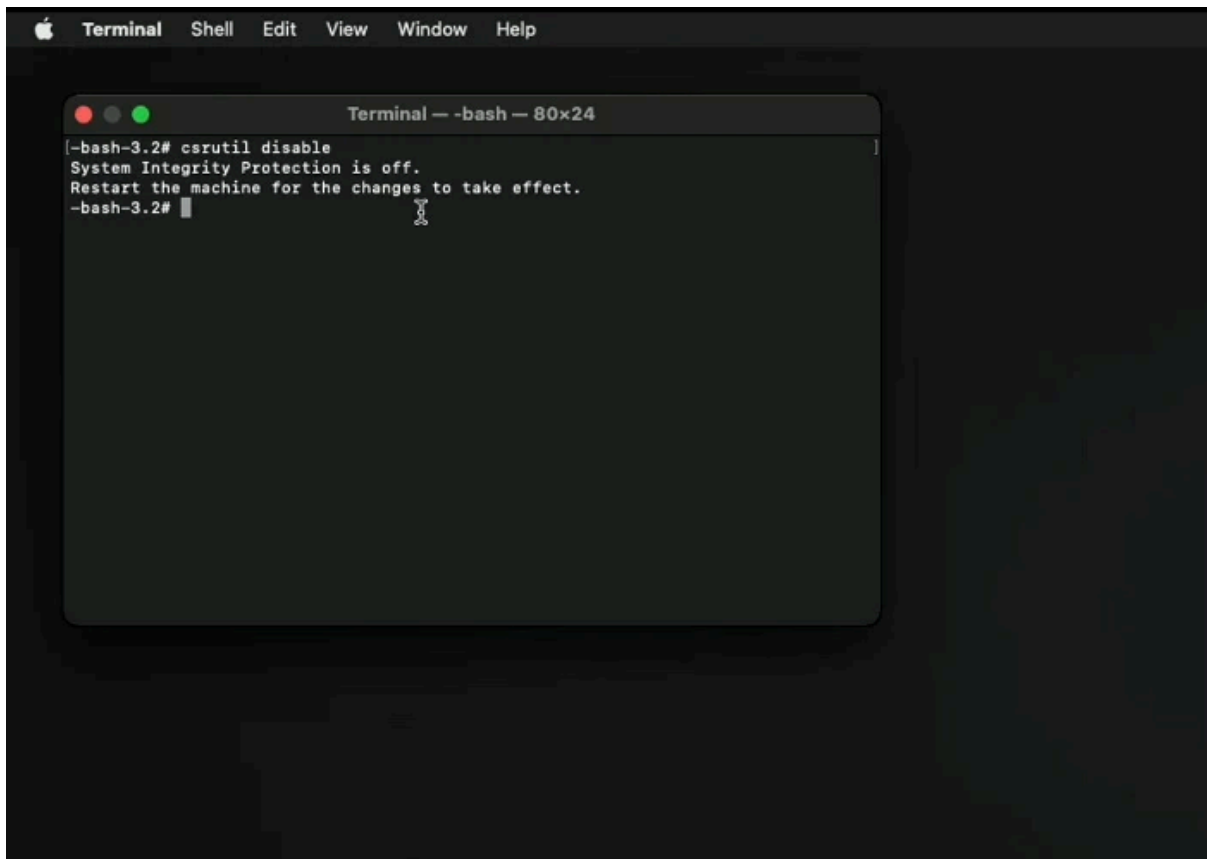
Now, go to the Menu bar. You will see **Utilities** as one of the options.

Utilities > Terminal



In the terminal and input the following command:

- **csrutil disable**
- Enter your password

A screenshot of a macOS Terminal window. The window title is "Terminal -- -bash -- 80x24". The menu bar at the top includes "Terminal", "Shell", "Edit", "View", "Window", and "Help". The terminal content shows the command `csrutil disable` being executed, resulting in the message: "System Integrity Protection is off. Restart the machine for the changes to take effect." The prompt `-bash-3.2#` is visible at the end of the output.

```
Terminal -- -bash -- 80x24
[-bash-3.2# csrutil disable
System Integrity Protection is off.
Restart the machine for the changes to take effect.
-bash-3.2#
```

Step 6: Restart Mac

Now, navigate to the menu bar (top left corner to the Apple Logo) and restart your computer or type **REBOOT**.

Step 7: Turn OFF Wifi

Turn off the wifi on your computer.

Step 8: Install Parallels

Go to the file you downloaded in Step 1 and open parallels.dmg file by right-clicking on it and choosing the install option. After the installation, **QUIT the parallels** desktop completely before running crack.



Step 9: Open Terminal

Go to the terminal and enter the following command. (Depends upon the folder you have the Parallels folder in; here the downloaded files are in Downloads folder.)

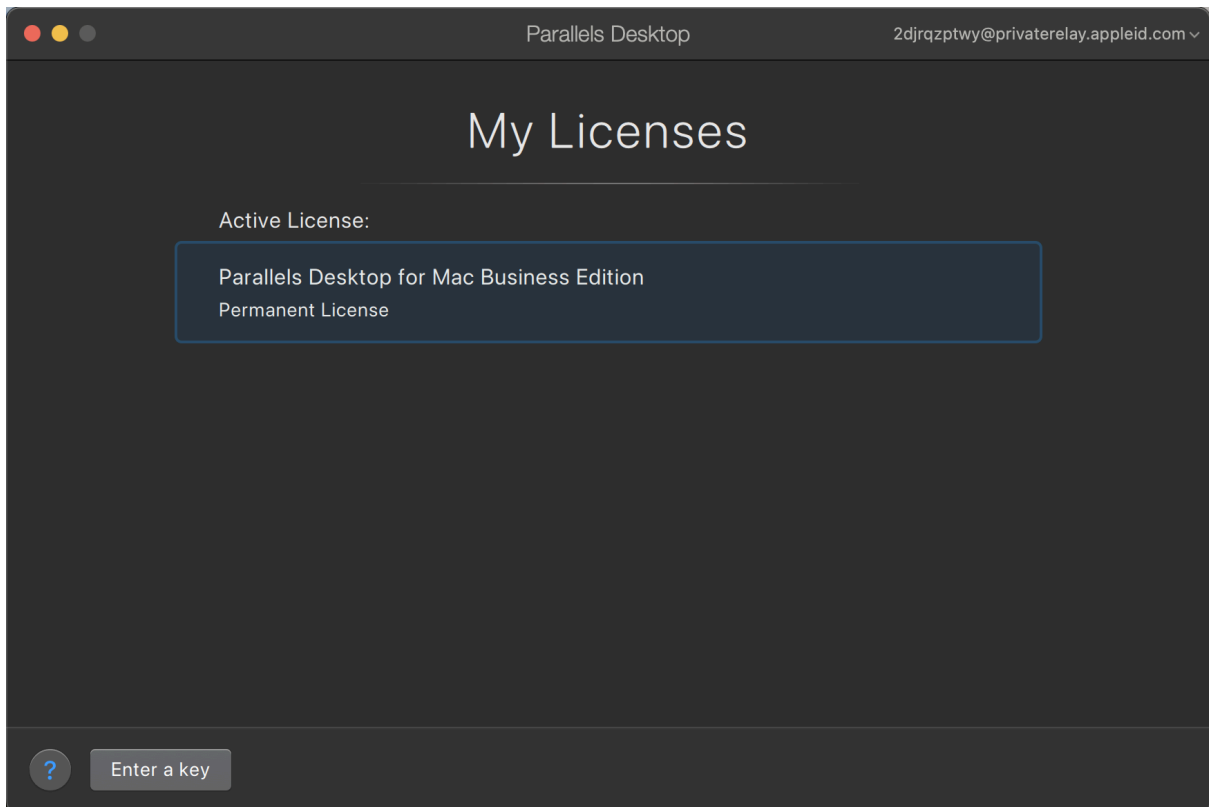
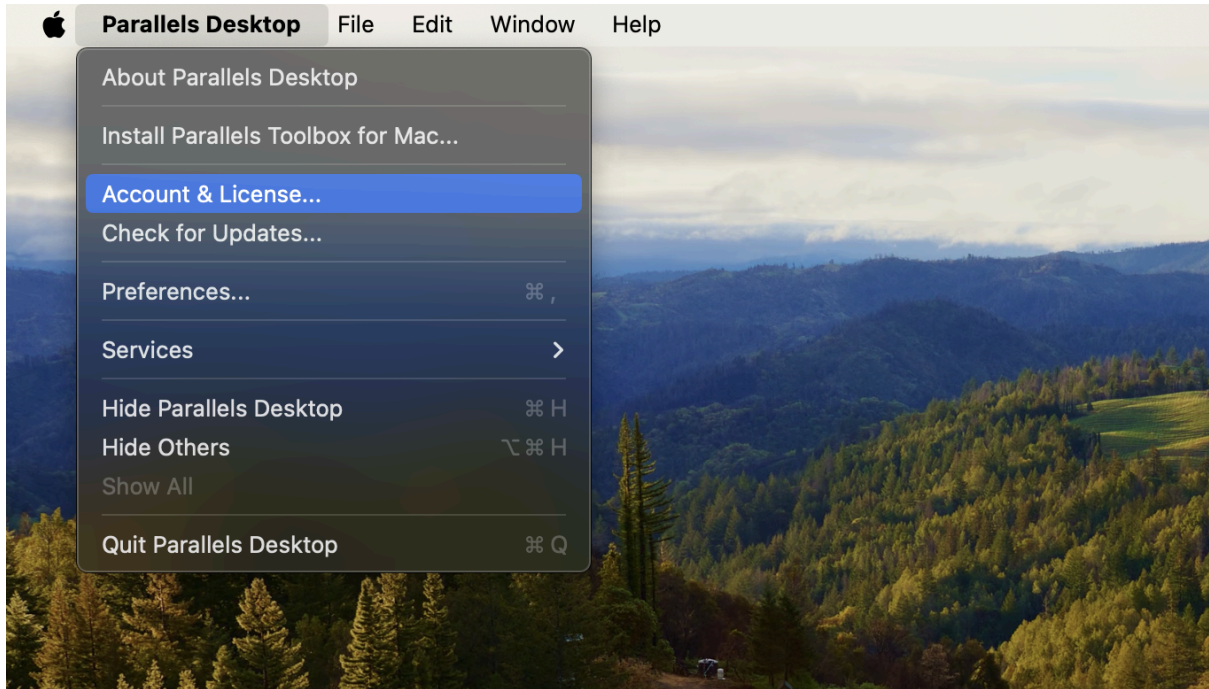
- cd Downloads
- cd Parallels (tab button)
- cd Inject (tab button)
- sudo ruby main.rb
- Enter your password

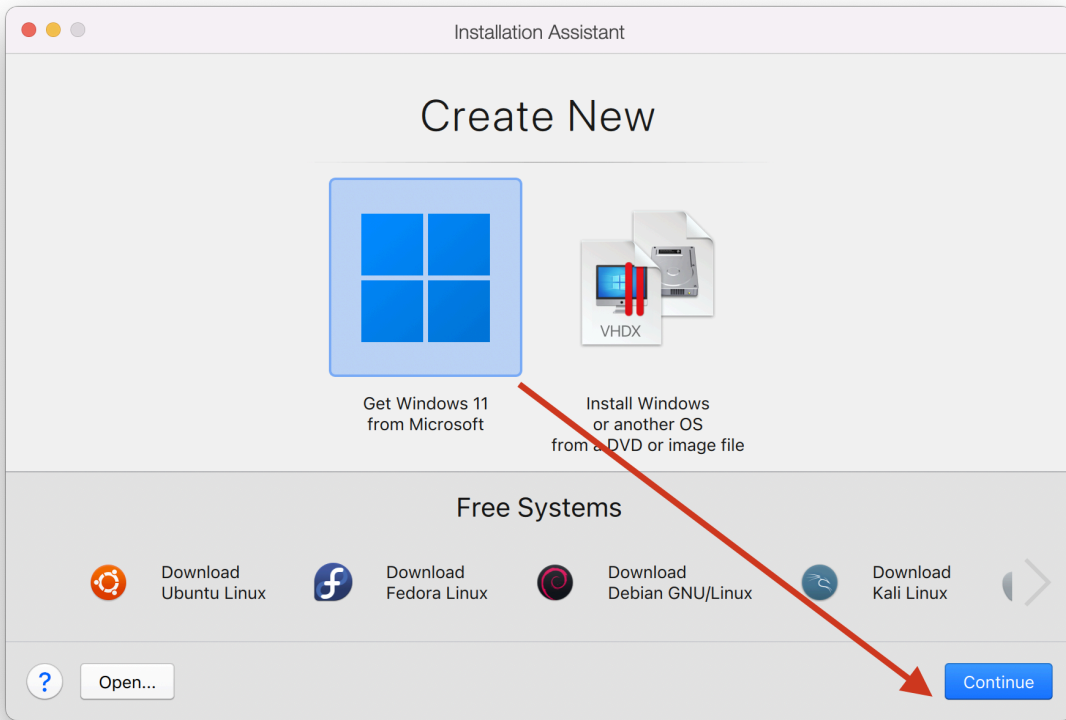
Step 10: Turn ON Wifi

Turn on the wifi on your computer.

Step 11: Check License and Download Win 11

Check if your Parallels has been cracked. For that, Open Parallels, right click on the Parallels icon at the bottom and click licences option and there you will be able to see that you will have acquired permanent licence. If you have the sign in Option then your parallels have not been cracked. If so, close parallels and repeat from Step 9 again. Then, you will be able to download Windows 11. Let it install and it will work fine.





Step 12: DO NOT UPDATE

Upon startup, Parallels asks for an update but “DO NOT UPDATE”.

